

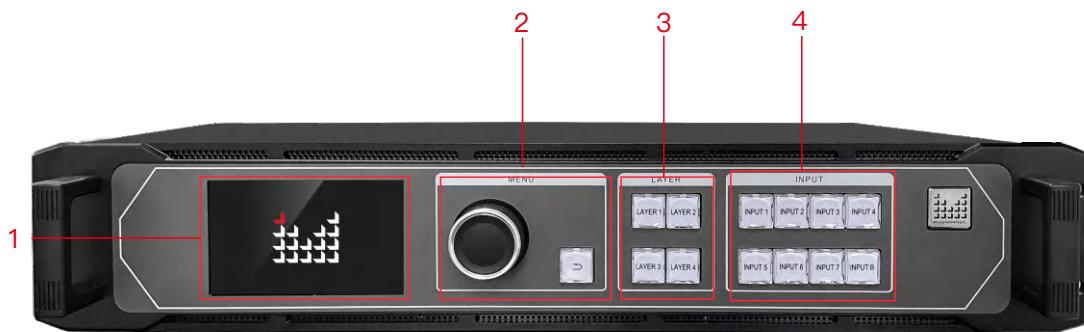
The LED-F908 is LED video control server developed by Magnimage for fixed installation. It is equipped with a complete video input interface, including 2×HDMI2.0, 2×DP1.2, 2×DVI, 1×audio, 1×12G SDI; and its outputs support 16 Gigabit network ports (8 main 8 backup), 2×10G optical fiber inputs/outputs (for signal input or copy the output with ethernet), 1×HDMI Loop, 1×audio output and 1×HDMI monitor. Working with MAGNIMAGE's Mach series receiving card, the loading capability of single port can reach 2.2M pixels(60Hz). The whole machine loading up to 17.6 million pixels, maximum width can be 16380 and maximum height can be 7680, and support customized output resolution.

LED-F908 support the function of quick light-up screen without computer software connection, greatly simplifying the setting step.

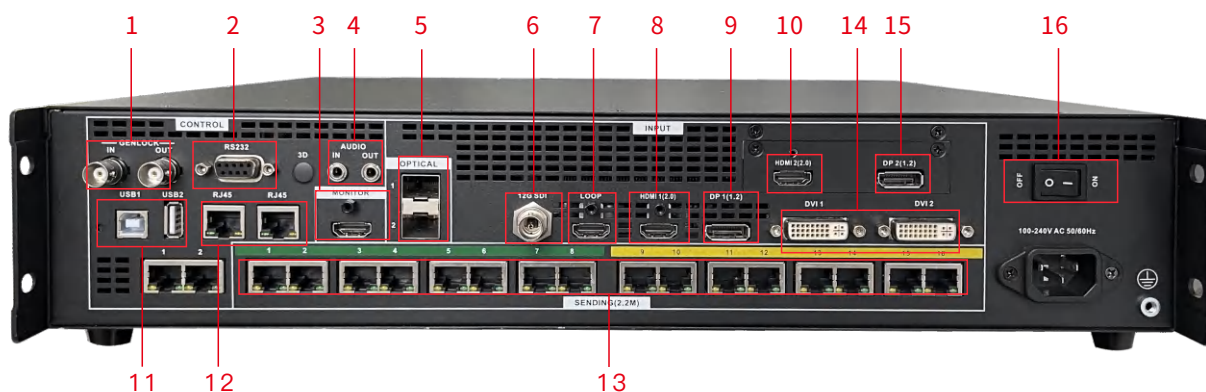
Features

- Quick light-up screen, without computer software connection
- 16 Gigabit network output ports (8 main 8 backup), 2.2 million pixels per 1G port
- 4K*2K/60Hz (HDMI2.0) or 8K*1K (DP1.2) input
- Four layers display, and full-screen roaming
- Sequence marking of receiver card
- Template save and load
- Multi-input mosaic within single controller and multi-cascade mosaic
- Network backup within single controller and between several controllers
- Input backup within single controller
- Multi-machine grouping backup, enabling the entire main system to synchronously switch to the backup system
- 4K@60Hz RGB 4:4:4
- Seamless switching between input signals and presets
- Input&output customized resolution
- Support local USB flash drive for reading and loading configuration files
- Built-in loop function for RJ45 control port, without local area network, easy to control for cascade operation
- Zoom and image crop
- Audio input&output
- Monitor output
- Advanced screen connection
- Free cable connection (in normal mode)
- Optical port input/output
- Connection with C-Link series receiving card
- RS232 and central control
- Time task and automatic brightness adjustment

LED-F908 Panel Introduction



- 1** LCD screen to show menu contents
- 2** Knob、Return
- 3** Layer select
- 4** Input signal select

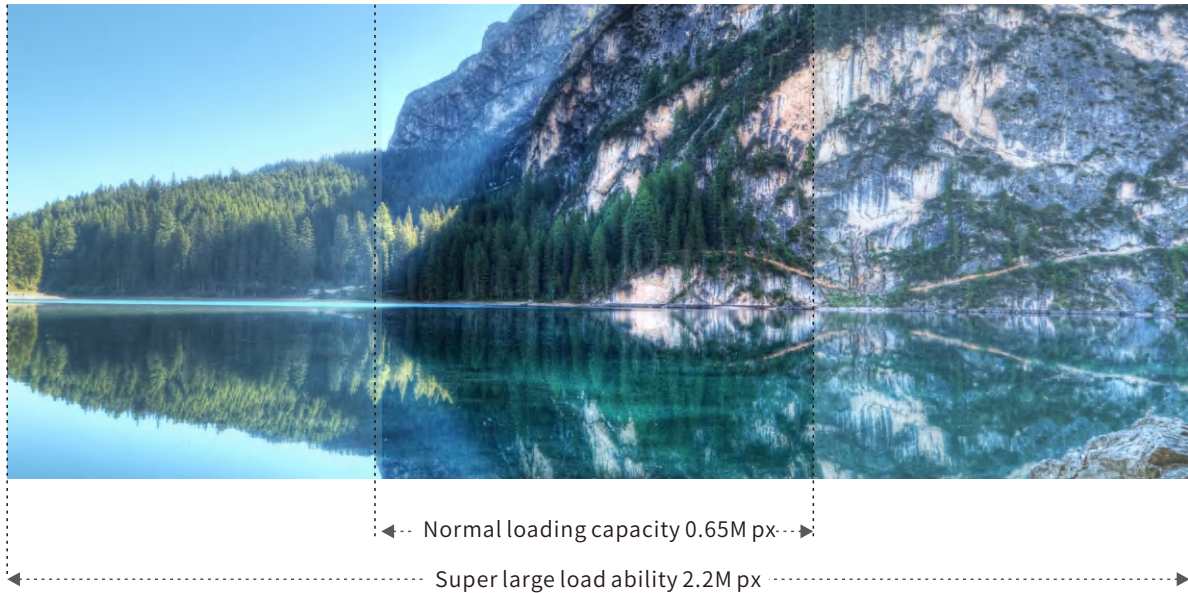


- 1** Genlock input/output
- 2** RS232 control port
- 3** HDMI monitor output
- 4** Audio input/output
- 5** 10G OPT input/output
- 6** 12G SDI input
- 7** HDMI 1 LOOP
- 8** HDMI 1(2.0) input
- 9** DP 1(1.2) input
- 10** HDMI 2(2.0) input
- 11** USB control/upgrade
- 12** RJ45 control/cascade
- 13** 16 Gigabit network output port(8 main 8 backup)
- 14** DVI 1+DVI 2 input
- 15** DP 2(1.2) input
- 16** Power switch

▮ Main Features and Characteristics

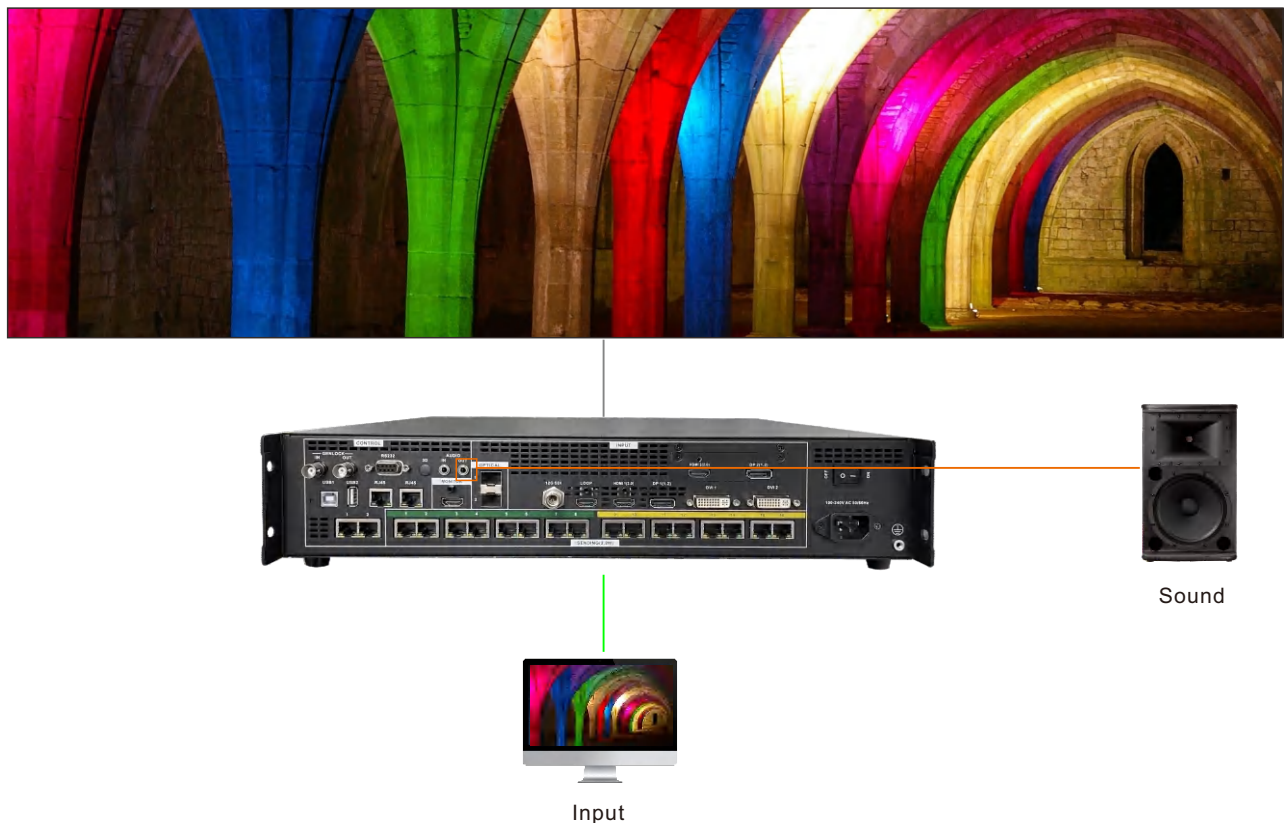
🖥 Super Large Load Ability

Breaking through the tradition with unique super large loading function, the loading capability of single port can reach 2.2M (2048×1080@60Hz).



🔊 Audio Input&Output

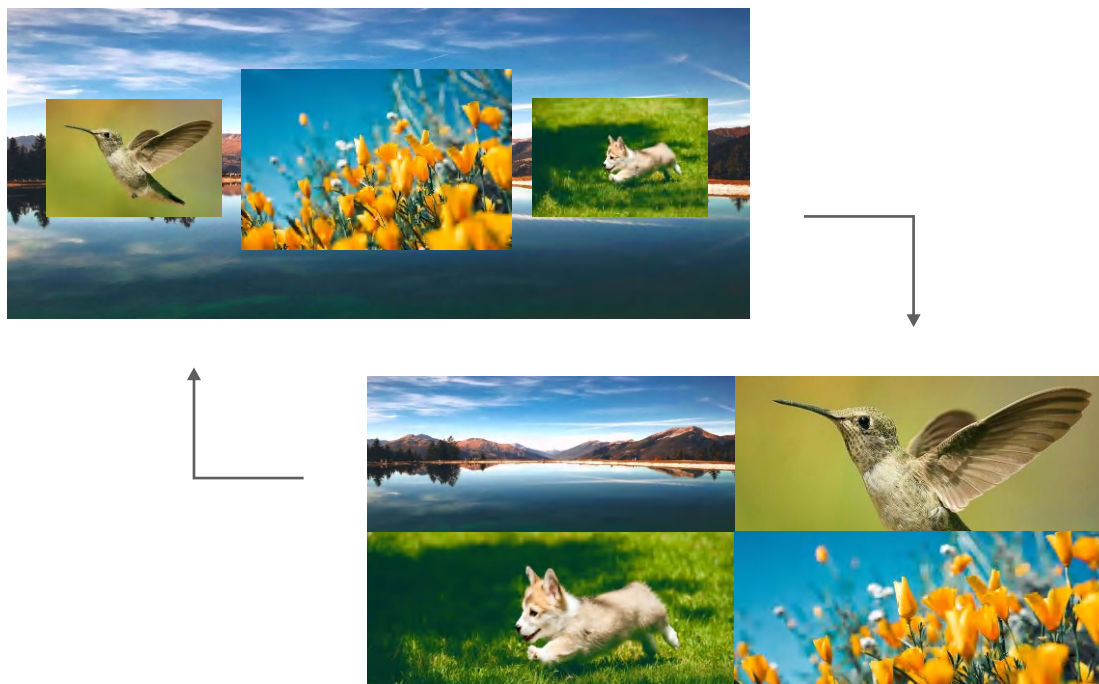
It is capable of receiving external audio and video signals, which are then processed by the LED-F908 for audio-video separation and output. The video imagery is transmitted to the LED display screen, while the audio signal is concurrently directed to external sound systems or amplifiers.



▮ Main Features and Characteristics

▮ 4 layers seamless switching

4 independent layers, freely adjustable; seamless switching between input sources and presets (4 layers to 4 layers); small projects handled at once.



▮ Scrolling Caption

Edit text content, size, color, scrolling speed and background color through software.



▮ Main Features and Characteristics

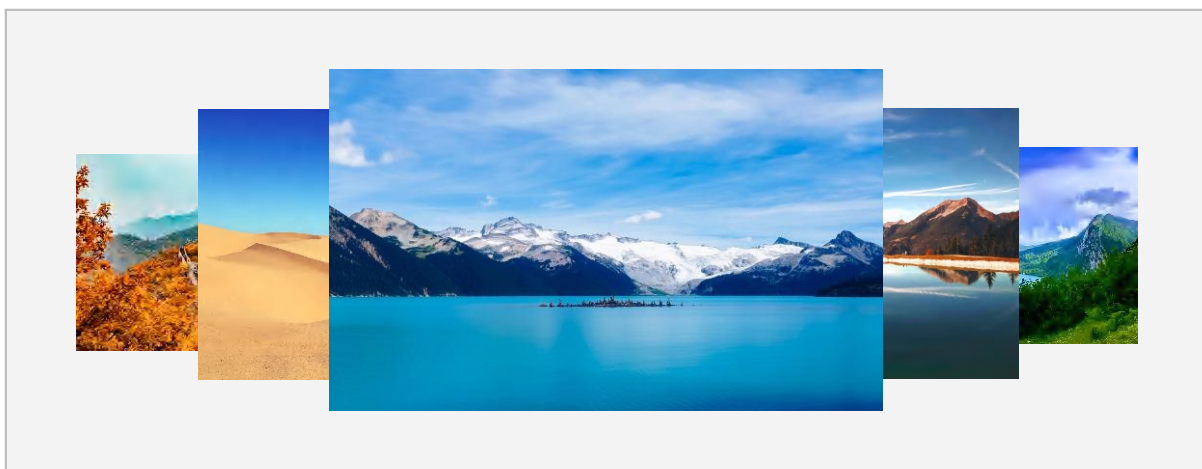
📺 Monitoring The Output

Connecting the external 2K display monitors that monitor the output of the entire machine, this machine helps make it easy for the operator to monitor the LED screen display in situations where the LED screen cannot be viewed directly, so that the operator can control the scene without worrying about the content.



📅 Time Task

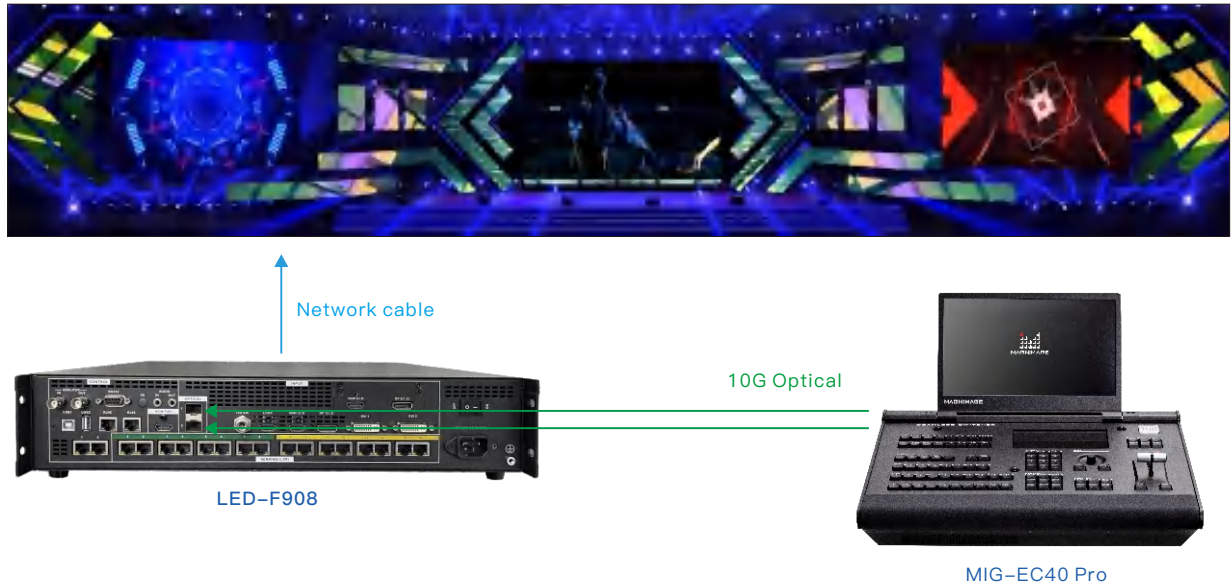
Support automatic switching of presets at set time points.



▮ Main Features and Characteristics

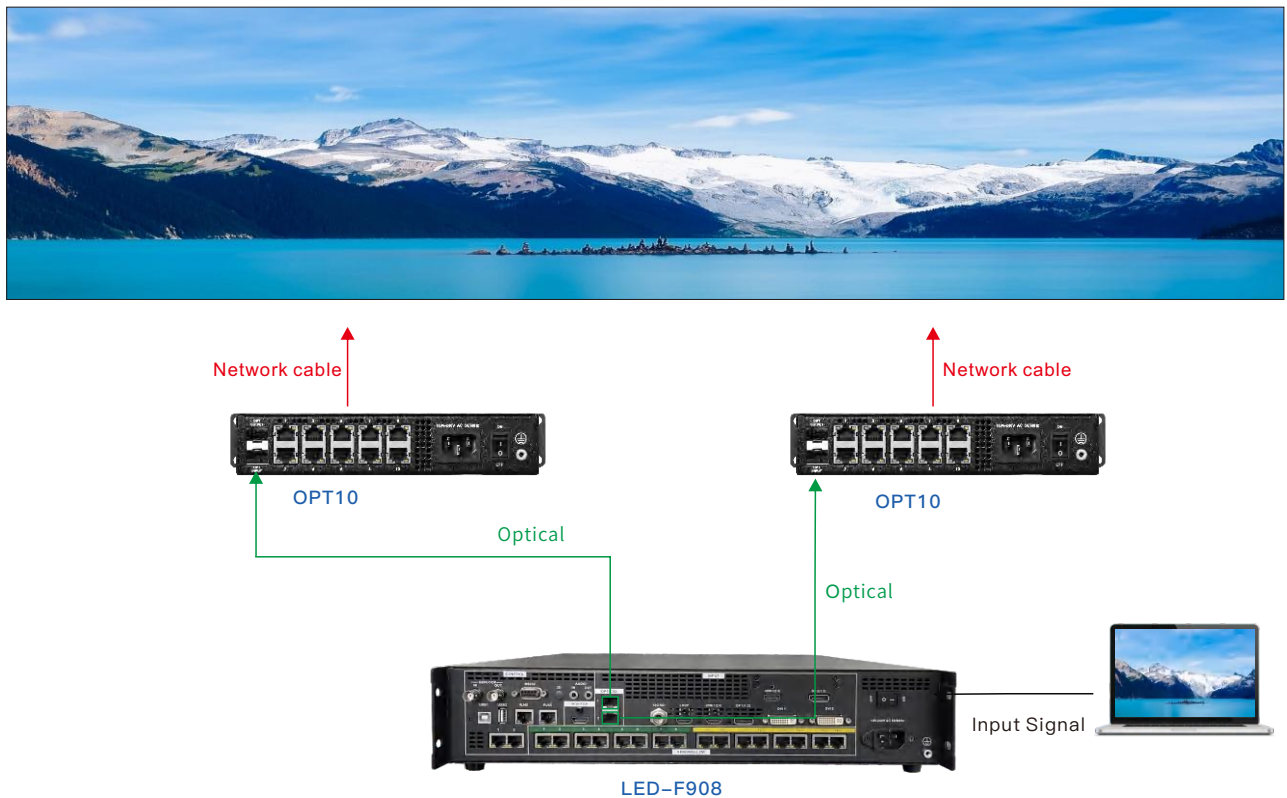
📺 Optical Input

MIG-EC40 Pro event console connects with LED-F908 video control server from 10G fiber to solve long distance transmission.



📺 Optical Output

LED-F908 video control server connect with OPT10 fiber converter from 10G fiber to solve long distance transmission.



▮ Main Features and Characteristics

📺 Automatic Brightness Adjustment

Support automatic brightness adjustment at the set time points.

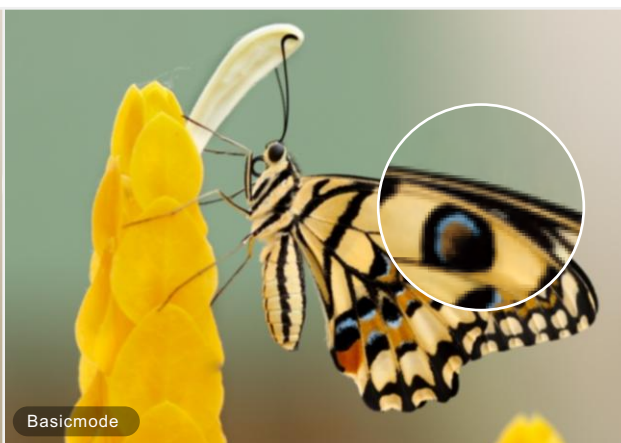
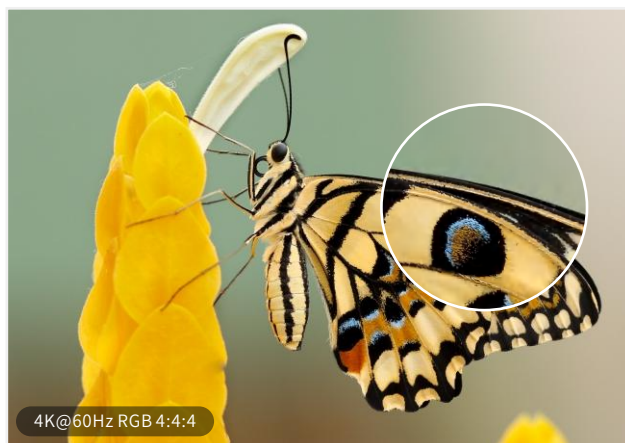


→
automatic
brightness
adjustment



📺 4K@60Hz RGB 4:4:4

The input, output and internal processing are all RGB 4:4:4 sampling, which can accurately restore the signal source image's details. The image display is clear and delicate. At the same time, there is no frame reduction or loss for the whole channel processing of the controller, making video playback smoother and displaying complete image details.



Main Features and Characteristics

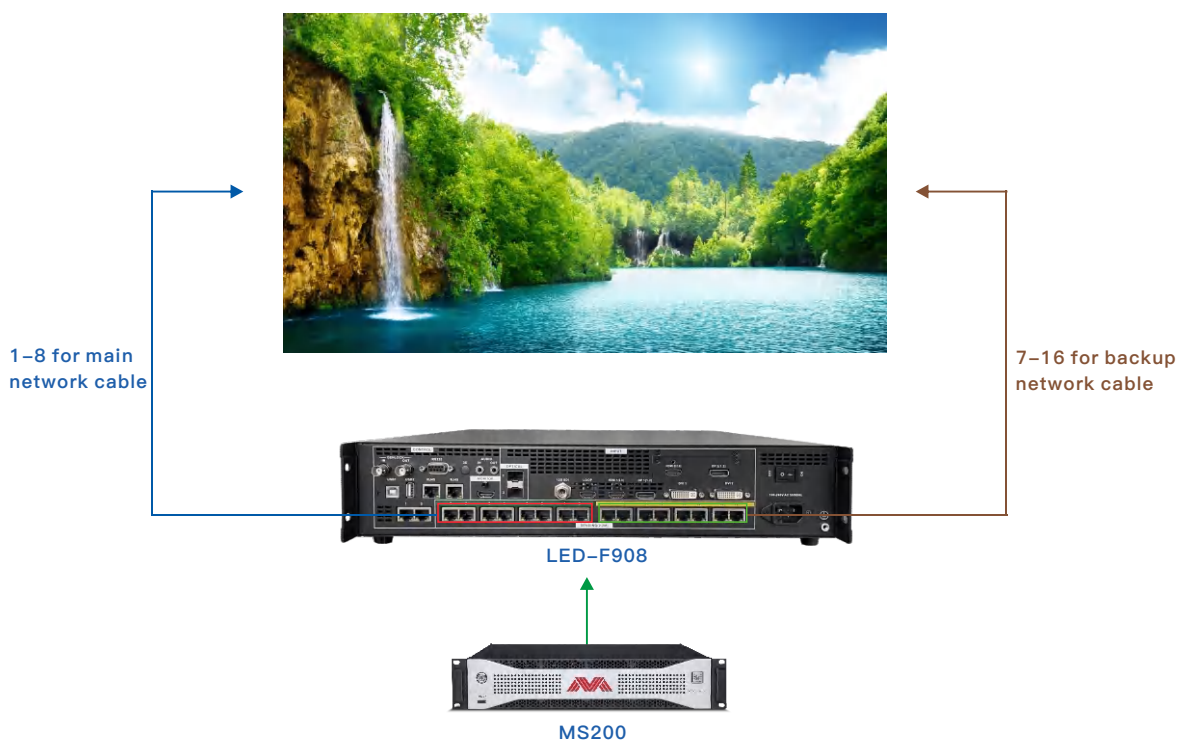
Cascading Control Of Multiple Machines

Built-in loop function for RJ45 control port, no need for local area network, easy to control for cascade operation.



Single-Machine Network Port Backup

For a single machine, network ports 1-8 are fixed as main, and ports 9-16 are fixed as backup.



Technical Parameters

Input specification		
Port	Model	resolution specification
	LED-F908	
HDMI2.0	2	3840X2160/60Hz and customized
DVI	2	3840X1080/60 and customized
OPT 1-2	2	For optical port input
DP1.2	2	3840X2160/60Hz, 7680×1080 and customized
12G SDI	1	2160P/60Hz,Backward compatible (not supported by SD)
Genlock	1	

Output specification		
Port	Quantity	Resolution specification
Ethernet port (connect receiving card)	16	2.2M for the single port, max 17.6M loading for the whole machine, port 1-8 is main and port 9-16 is backup;max horizontal 16380 px, max vertical 7680 px
HDMI LOOP	1	HDMI Loop, the same with HDMI (1) 2.0
HDMI Monitor	1	Monitor the output of the whole machine,1920×1080/60Hz
OPT 1-2	2	For optical port copied signal output
Genlock	1	

Control port		
Port	Quantity	
Square opening USB	1	For pc software control
RJ45	2	For pc software control or Multiple unit cascade control
RS232	1	For RS232 control

Machine Specification	
Input Power Voltage	100-240V AC 50/60HZ
Power Consumption	80W
Working Temperature	-10°C - 45°C
Working humidity	5%RH - 75%RH
Dimension (L×W×H)	482.6X451.5X88mm
Weight	7.6KG



Shenzhen Magnimage Technology Co., Ltd.

Address:801, Bld. G2, TCL International E City,#1001
 Zhongshan Park Road, Nanshan, Shenzhen, China, 518052
 Tel:86-755-8664 7651 Fax:86-755-8664 7650
 Website: www.magnimage.com